

4/12/2021 12:10:22 PM

C:\Users\Garrett\Documents\20063 - William Byrd HS - Central\Interim\BU7.rvt

Revisions		
No.	Date	Description

HUGHES ASSOCIATES
ARCHITECTS & ENGINEERS
 605 ELM AVENUE, S.W. | FARMHOLE, VIRGINIA 24005-1034
 www.hughesac.com
 940.342.4002

Renovations and Additions
WILLIAM BYRD HIGH SCHOOL
 2902 E Washington Ave
 Vinton, Virginia



DRAWN BY: EHS/KGG
 CHECKED BY: Checker

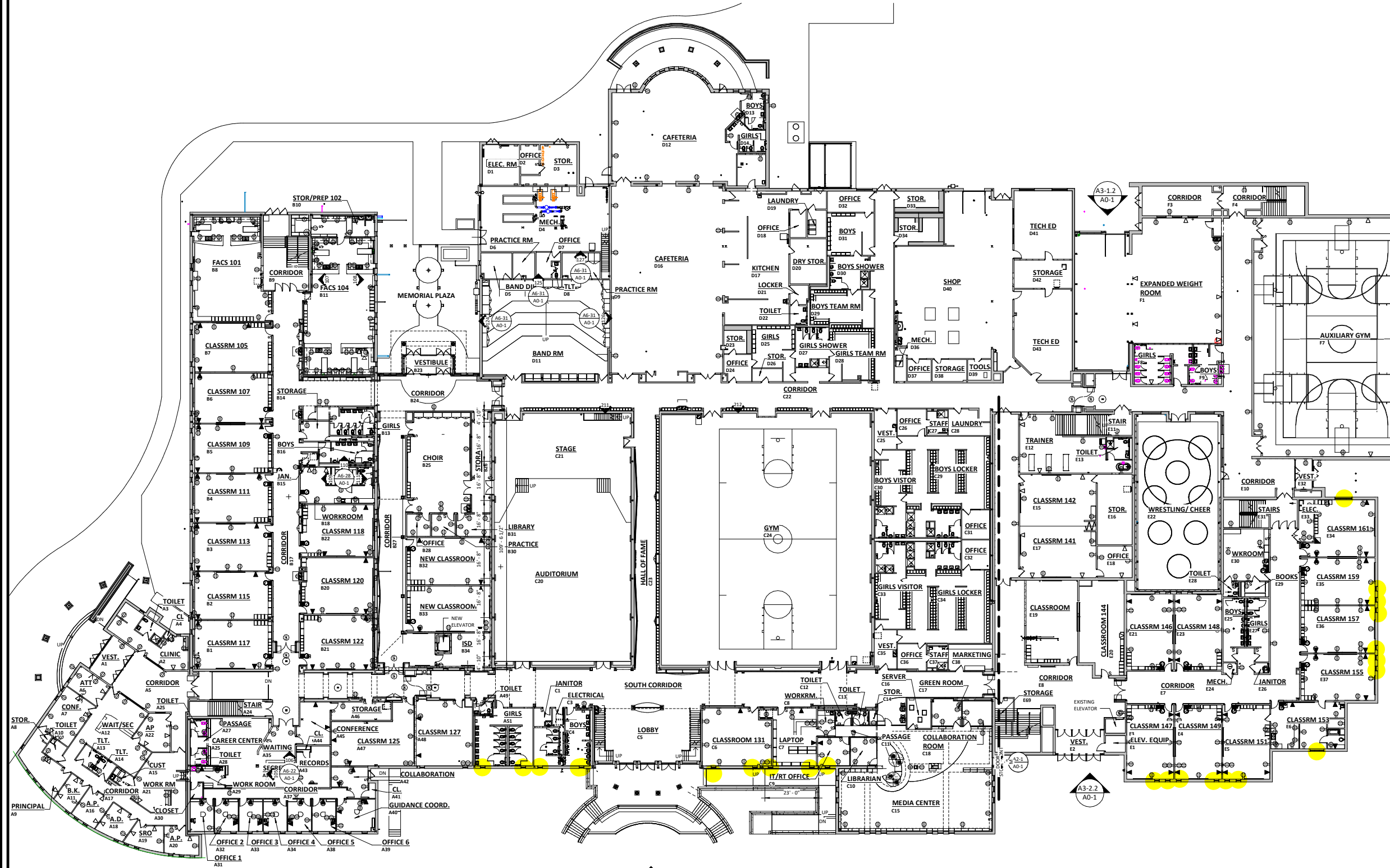
**OVERALL
 FIRST FLOOR
 PLAN**

PROGRESS PRINT
 NOT FOR
 CONSTRUCTION
 80% GMP
 FOR COORDINATION ONLY

COMMISSION No.
 20063
 SHEET
A0-1

© COPYRIGHT 2021
 HUGHES ASSOCIATES ARCHITECTS & ENGINEERS
 A PROFESSIONAL CORPORATION

SHAND COUNTY APPROVAL SEAL



FIRST FLOOR PLAN - OVERALL
 1/16" = 1'-0"